

# Ten Best Reasons to Do a PhD at Johns Hopkins Biostatistics

10. Founded in 1918,

- we are the **first academic department** of biostatistics in the world;
- we have remained **among the world's best** throughout out 85 year history

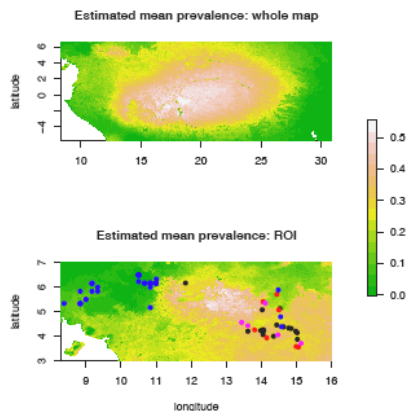
Hopkins Biostatistics  
circa 1920



## 9. At Hopkins Biostatistics, we seek what is “true”



# 8. Faculty and students work together to address critical issues in statistics, biomedicine and public health



Johns Hopkins University  
Johns Hopkins University, Dept. of Biostatistics Working Papers

Year 2006

Paper 103

## BIVARIATE BINOMIAL SPATIAL MODELLING *Loa loa* PREVALENCE IN TROPICAL AFRICA

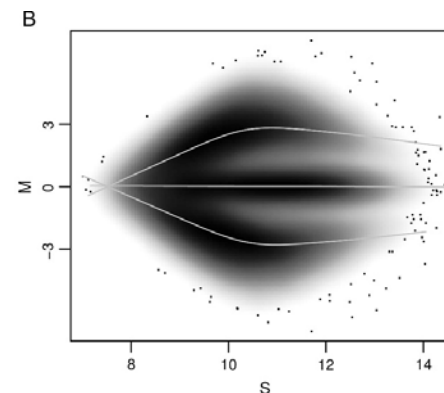
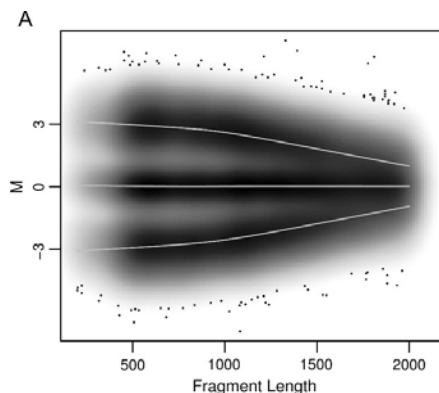
Ciprian M. Crainiceanu \* Peter J. Diggle †  
Barry Rowlingson ‡

To appear in *JASA*, with discussion, 2008

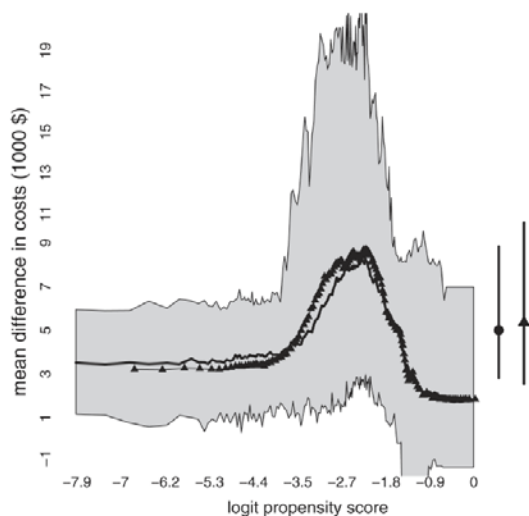
## A gene expression bar code for microarray data

Michael J Zilliox<sup>1,3</sup> & Rafael A Irizarry<sup>2</sup>

NATURE METHODS | VOL.4 NO.11 | NOVEMBER 2007 | 911



# 8. Faculty and students work together to address critical issues in statistics, biomedicine and public health



**Smooth quantile ratio estimation with regression:  
estimating medical expenditures for  
smoking-attributable diseases**

FRANCESCA DOMINICI\*, SCOTT L. ZEGER

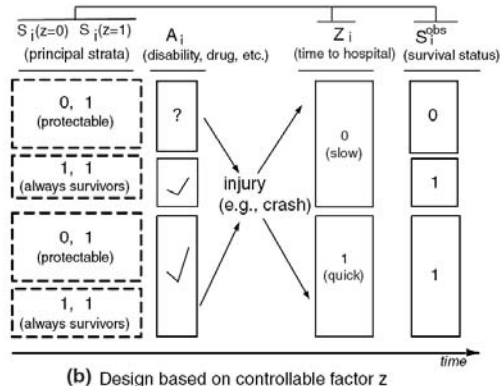
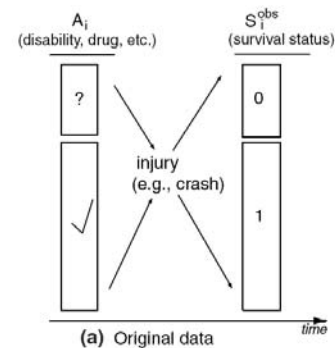
Department of Biostatistics, Bloomberg School of Public Health,  
The Johns Hopkins University, Baltimore, MD 21205-3179, USA  
fdominic@jhsph.edu

*Biostatistics* (2005), 6, 4, pp. 505–519

## Principal Stratification Designs to Estimate Input Data Missing Due to Death

Constantine E. Frangakis,<sup>1,\*</sup> Donald B. Rubin,<sup>2</sup> Ming-Wen An,<sup>1</sup> and Ellen MacKenzie<sup>3</sup>

BIOMETRICS 63, 641–662  
September 2007



7. Hopkins Biostatistics is a part of the best schools of public health (1<sup>st</sup>) and medicine (2<sup>nd</sup>) in the U.S.

*U.S. News and World Report, 2004*

About the Rankings | Help | Log In

## America's Best Graduate Schools 2007

Get the Premium Online Edition Now!

BEST GRAD SCHOOLS INDEX | TOOLS | ARTICLES

LEARN MORE > | BUY >

### Health Disciplines: Public Health Ranked in 2003\*

#### Rank/School

Average assessment  
score (5.0 = highest)

- |    |   |     |
|----|---|-----|
| 1. | <a href="#">Johns Hopkins University</a> (MD)             | 4.9 |
| 2. | <a href="#">Harvard University</a> (MA)                   | 4.7 |
|    | <a href="#">University of North Carolina--Chapel Hill</a> | 4.7 |
-

6. **Full funding is available** for PhD students

\$37,000 tuition

20,000 stipend

2,700 health insurance

**\$59,700** total per year

**5 years x \$59,700 = \$298,500 support**

5. We are proudly a **diverse faculty and student** body from:

- **United States**
- **Italy**
- **Germany**
- **China**
- **Brazil**
- **Greece**
- **Puerto Rico**
- **India**

- **Brooklyn, New York**
- **Romania**
- **Hampden, Baltimore**
- **Ireland**
- **Canada**
- **Pakistan**
- **Uganda**

4. We have an **apprenticeship model** of graduate education;

20 faculty and 40 PhD students working together on research projects to advance statistical science and the public's health

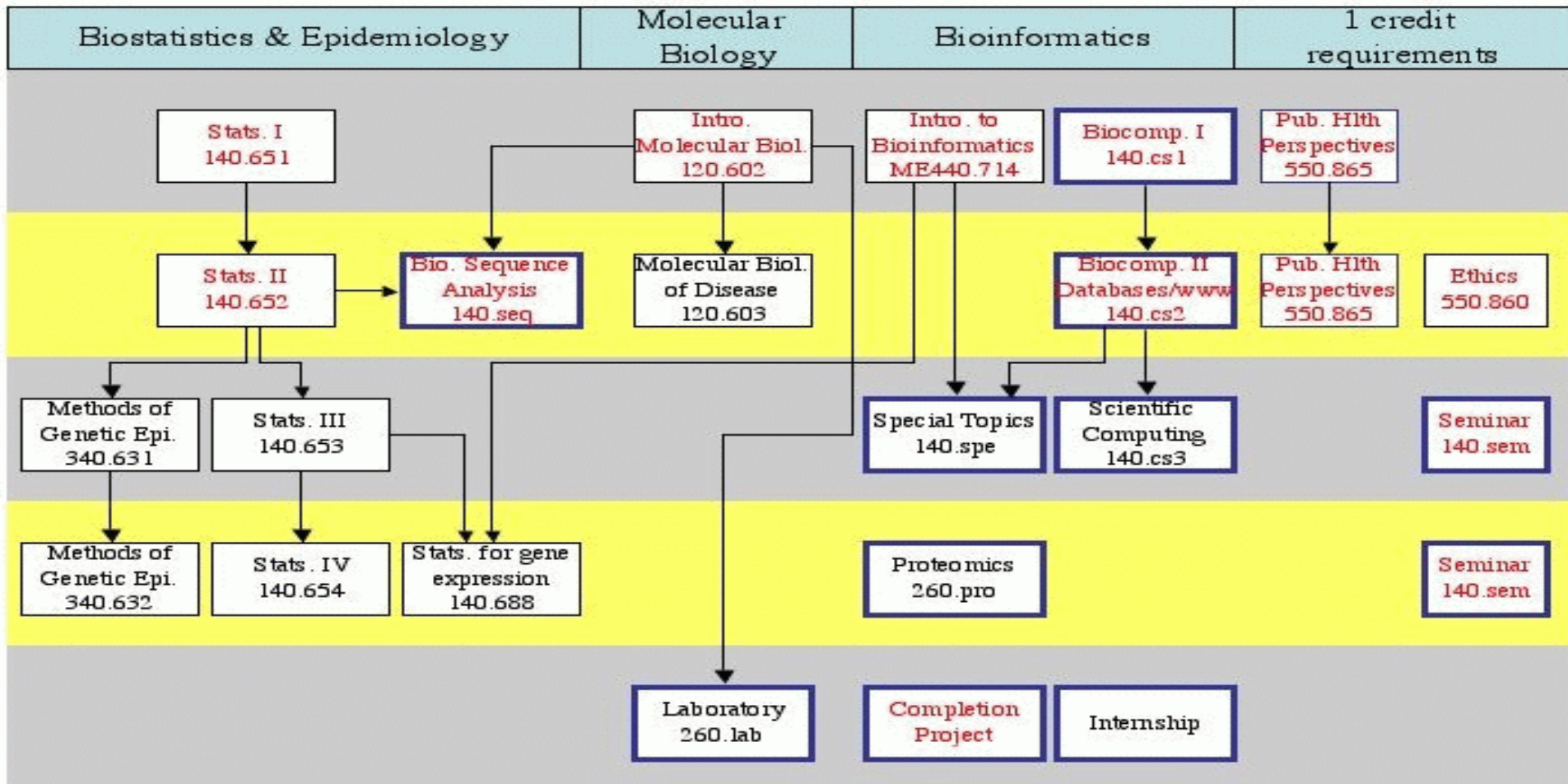


3. We adhere to an ancient Chinese proverb: “a group that eats together, learns together.”

- Annual two-day scientific retreat on the Chesapeake Bay (or similarly exciting place - Hampden?)
- Friday afternoon happy hour
- Bi-weekly student journal club (with pizza)
- Weekly seminar (with Peet’s coffee, tea and pastries)
- Annual Chili party
- Other parties to which the chair is uninvited

## 2. You can earn a **joint masters degree in bioinformatics**

### Core bioinformatics curriculum



<http://www.bioinformatics.jhsph.edu/mhs.html>

## 1. Graduates are in **high demand**

- 70% in University positions; recent grads at:
  - University of Washington
  - Brown University
  - Johns Hopkins University
  - University of Minnesota
  - University of Chicago

and are **highly paid**:

- starting salary of approximately \$90,000 in university /government; \$110,000 in industry

And one more reason to earn a PhD at Johns Hopkins  
Biostatistics is:

0. Who can resist a department as good looking as this one?



# For more information

<http://www.biostat.jhsph.edu>

Dan Scharfstein ([dscharf@jhsph.edu](mailto:dscharf@jhsph.edu))

Kung-Yee Liang ([kyliang@jhsph.edu](mailto:kyliang@jhsph.edu))

Graduate Program Co-directors

Ms. Mary Joy Argo ([margo@jhsph.edu](mailto:margo@jhsph.edu))

Academic Coordinator